



STANTON

CARPET + CUSTOM RUGS + RUNNERS

RUNNING LINE BRAND HIGHLIGHTS 2020

ANTRIM
HANDWOVEN CARPETS & RUGS

Rosecore
LUXURIOUS CARPET & CUSTOM RUGS

Crescent
DISTINCTIVE CARPET | CUSTOM RUGS

HIBERNIA
WOLEN MILLS

CUSTOMER SERVICE HOURS 8:30AM - 6:00PM EST • 706.624.9385 • STANTONB2B.COM

STANTON

CARPET ♦ CUSTOM RUGS ♦ RUNNERS

Stanton Carpet Corporation was built on the mission to create a brand that was synonymous with style and value for the decorative market. Over the past 40 years, the company has grown to be the nation's leading supplier of decorative, high-quality carpet and custom rugs. Stanton Carpet features high quality, designer-driven patterns in wool and synthetic fibers available through select flooring showrooms throughout the US & Canada. Stanton continues to set new standards of innovation and design in wool patterns & textures, flat-weaves, wool blends, nylons, synthetic and natural fiber products for both residential and commercial applications. New for 2020, Stanton has introduced a unique and great looking collection of Decorative Waterproof Plank Flooring.



Felix in Silver | @mrshowardcharlotte



Ticking Stripe in Shadow | @zac_and_ruby



Encore Square in Argent | @mercerbuilt



Oxford Street in Sky | @carpetimnyc

Snap it. Tag it. Share it.

We love seeing the many creative ways you use Stanton at home and in your design projects. Share our mutual love for Stanton and our family of brands on social media by tagging us @stantoncarpet and using #stantoncarpet for a chance to be featured and inspire our dedicated followers.



San Michele in Cloud | @perfectcustom



Pioneer Key in Pearl | @stefanie_danby_interiors



Delavan in Smoke | @thecarpetplace1



Sound Waves in Blossom | @tarasoffinteriors



Shaggy Kasbeh in Sal de Mer | @floor_concepts_corp



Congo in Metal | @floorsbytheshore

STANTON / BRANDS

STANTON
CARPET + CUSTOM RUGS + RUNNERS

Rosecore
LUXURIOUS CARPET & CUSTOM RUGS

ANTRIM
HAND-LOOMED CARPETS & RUGS

Crescent
DISTINCTIVE CARPET | CUSTOM RUGS

HIBERNIA
WOOLEN MILLS

STANTONST
DECORATIVE COMMERCIAL

Atelier
BY STANTON

STANTON
DECORATIVE WATERPROOF FLOORING



FLOOR: OCEANVIEW BLANK CANVAS

RUG: PALERMO LINEAGE

STANTON / TIMELINE

- **APR 1980** Stanton Carpet Corporation opens
- **SEP 1993** Introduces “The Wilton Gallery” collection
- **APR 1995** Acquires Royal Dutch Carpets
- **APR 1996** Launches national shelter magazine advertising campaign
- **AUG 1999** Expands and moves from Dalton to Calhoun GA with purchase of 80,000 square foot distribution center
- **JUL 2000** Floor Focus survey of independent retailers ranks Stanton #5 in Design, #7 in Quality, #7 in Service for Favorite Carpet manufacturer and is rated #10 in best overall business experience
- **SEP 2002** Signs top designer Jacquie Beasant to lead product Development Team
- **JAN 2004** Promotes George Forte to VP of sales
- **AUG 2006** Recapitalization of Stanton Carpet with Linsalata Capital Partners
- **NOV 2007** Stanton Acquires Antrim Carpets USA, Ltd.
- **JUL 2009** Floor Focus survey of independent retailers ranks Stanton #5 in Service, #9 in Quality and #6 in Design
- **NOV 2009** HFN survey ranks Stanton #10 in the top rug brands
- **OCT 2010** Stanton acquires wholesale carpet division from F. Schumacher and rebrands as Rosecore
- **AUG 2012** Recapitalization of Stanton Carpet with Norwest Equity Partners
- **MAR 2014** Jonathan Cohen Named CEO of Stanton Carpet
- **SEP 2015** Opens new 227,000 square foot customer service, distribution and fabrication center in Calhoun, GA
- **JUL 2016** Stanton acquires Crescent Carpet Importers
- **NOV 2016** Recapitalization of Stanton Carpet with Quad-C Management
- **JUL 2017** Floor Focus dealer survey ranks Stanton among Top 5 in favorite carpet & rug manufacturers for design, quality & service.
- **OCT 2017** Mitch White promoted to VP of Sales and George Forte transitions to Executive Development Director
- **OCT 2017** Launches revolutionary new B2B platform with STANTONB2B.COM
- **NOV 2017** Stanton acquires Hibernia Woolen Mills
- **JAN 2018** Re-launches Stanton, Antrim, Rosecore + Crescent consumer websites
- **JULY 2018** Floor Focus Survey, Top 5 in Quality, Service, & Design
- **OCT 2018** Stanton launches Stanton Street Decorative Commercial
- **NOV 2018** Stanton’s new Woodbury, NY headquarters opens
- **JULY 2019** Stanton ranks #1 Favorite Area Rug Supplier by Floor Focus dealer survey and Top 5 Favorite Carpet Manufacturer
- **JAN 2020** Stanton launches first-ever hard surface product with introduction of Stanton Decorative Waterproof Flooring



BAHIA

STANTON / COLLECTION HIGHLIGHTS



EDGEWATER IN STONE



FELIX IN SILVER



GALACTICA IN TEAK

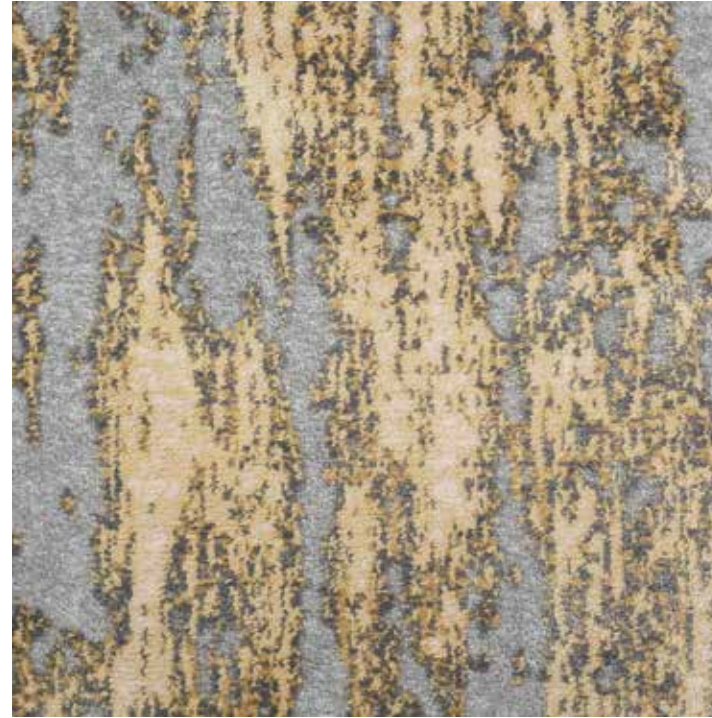


MARVELOUS

ARABELLA

AVAILABLE IN 6 COLORS
(SHOWN IN GOLDEN)

BELLA COLLECTION • SD ROYALTRON™ / POLYSILK • WILTON FACE TO FACE • 13'2" WIDTH



EDGEWATER

AVAILABLE IN 6 COLORS
(SHOWN IN BEACH)

TIDES COLLECTION • ROYALTRON™ / POLYSILK • WILTON FACE TO FACE • 13'2" WIDTH



@BEAUTIFULSTAIRRUNNERS



CLAIRBELLA

AVAILABLE IN 6 COLORS
(SHOWN IN SLATE)

BELLA COLLECTION • SD ROYALTRON™ / POLYSILK • WILTON FACE TO FACE • 13'2" WIDTH



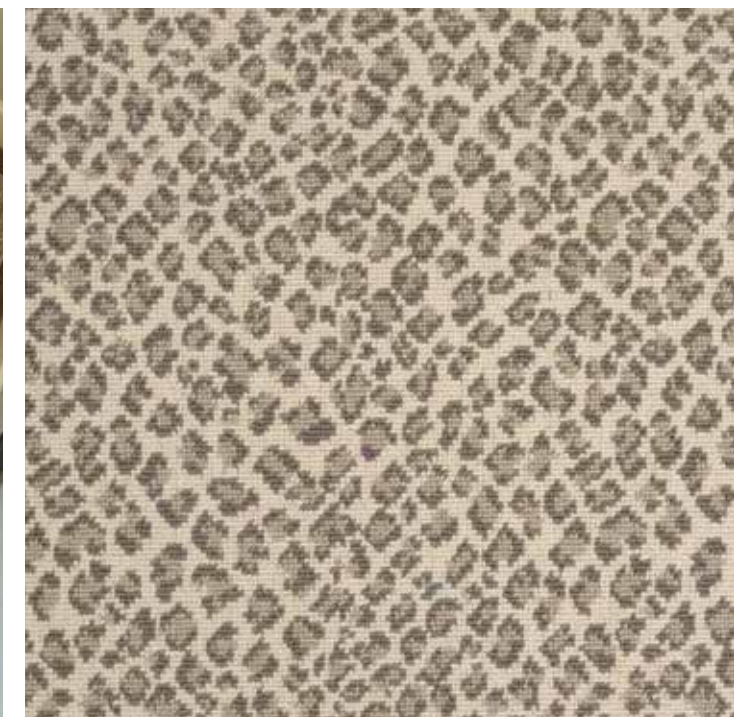
FELIX

AVAILABLE IN 10 COLORS
(SHOWN IN SILVER)

WILTREX COLLECTION • WOOL / NYLON • WILTON WOVEN • 13'2" WIDTH



@MRSHOWARDCHARLOTTE



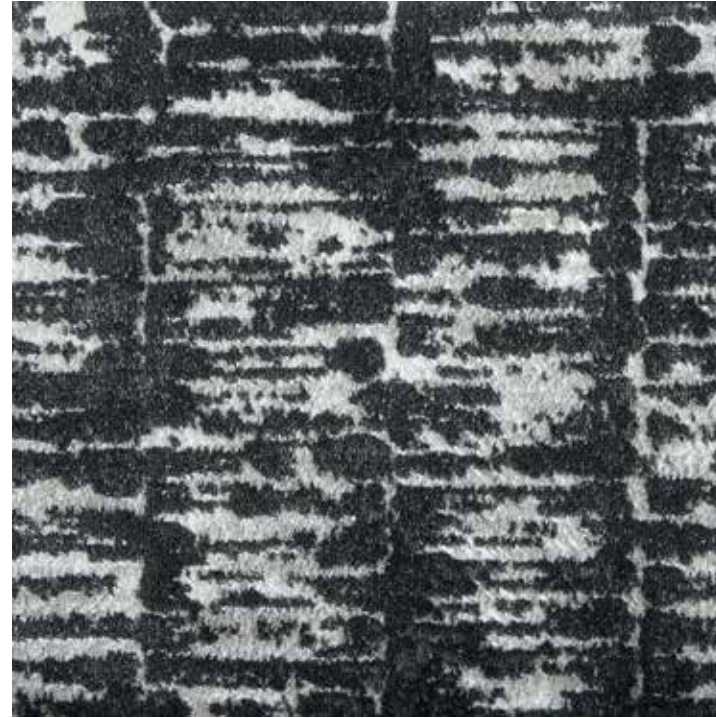
GALACTICA

AVAILABLE IN 5 COLORS
(SHOWN IN COAL)

LUMANI COLLECTION • ROYALTRON™ / POLYSILK • WILTON FACE TO FACE • 13'2" WIDTH



@AMANDAKARPINTERIORS



JAZZY

AVAILABLE IN 13 COLORS
(SHOWN IN DUNE)

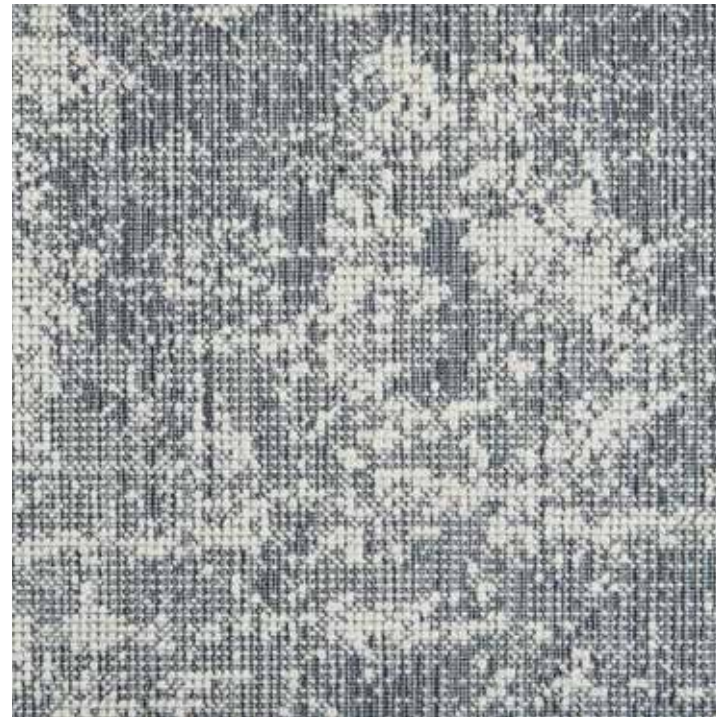
ATELIER MARQUEE COLLECTION • NYLON • MACHINE TUFTED • 13'2" WIDTH



HILLSIDE

AVAILABLE IN 6 COLORS
(SHOWN IN RAVEN)

COTTAGE COLLECTION • WOOL / POLYSILK • WILTON WOVEN • 13'2" WIDTH



KING CHEETAH

AVAILABLE IN 8 COLORS
(SHOWN IN DENIM)

KILIMANJARO COLLECTION • ROYALTRON™ • WILTON FACE TO FACE • 13'2" WIDTH



MAGICAL

AVAILABLE IN 6 COLORS
(SHOWN IN BEACH)

ENCHANTED COLLECTION • SD ROYALTRON™ • WILTON FACE TO FACE • 13'2" WIDTH



MONTPELIER

AVAILABLE IN 9 COLORS
(SHOWN IN TAUPE)

ROYAL PAVILLION COLLECTION • SD ROYALTRON™ • WILTON FACE TO FACE • 13' 2" WIDTH



MARVELOUS

AVAILABLE IN 5 COLORS
(SHOWN IN SKY)

ROMANTIQUE COLLECTION • ROYALTRON™ / POLYSILK • WILTON FACE TO FACE • 13'2" WIDTH



OXFORD STREET

AVAILABLE IN 7 COLORS
(SHOWN IN ICED MINT)

ATELIER MARQUEE COLLECTION • PRINTED NYLON • CUT PILE • 13' 2" WIDTH
RESIDENTIAL TO MEDIUM COMMERCIAL



@DUZYDESIGNS

RIPPLEWATER

AVAILABLE IN 5 COLORS
(SHOWN IN ECRU)

TIDES COLLECTION • SD ROYALTRON™ / POLYSILK • WILTON FACE TO FACE • 13'2" WIDTH



@TAMIROSENBAUMINTERIORS



SHAGGY GLAMAZON

AVAILABLE IN 5 COLORS
(SHOWN IN IVORY)

AVANT GARDE COLLECTION • ROYALTRON™ • 13'2" WIDTH



@CAMPBELLSCARPET



SAUNDERS BEACH

INDOOR | OUTDOOR
AVAILABLE IN 6 COLORS (SHOWN IN OCEAN)

PARADISE COLLECTION • UV STABILIZED POLYSILK • 15' WIDTH RESIDENTIAL TO LIGHT COMMERCIAL



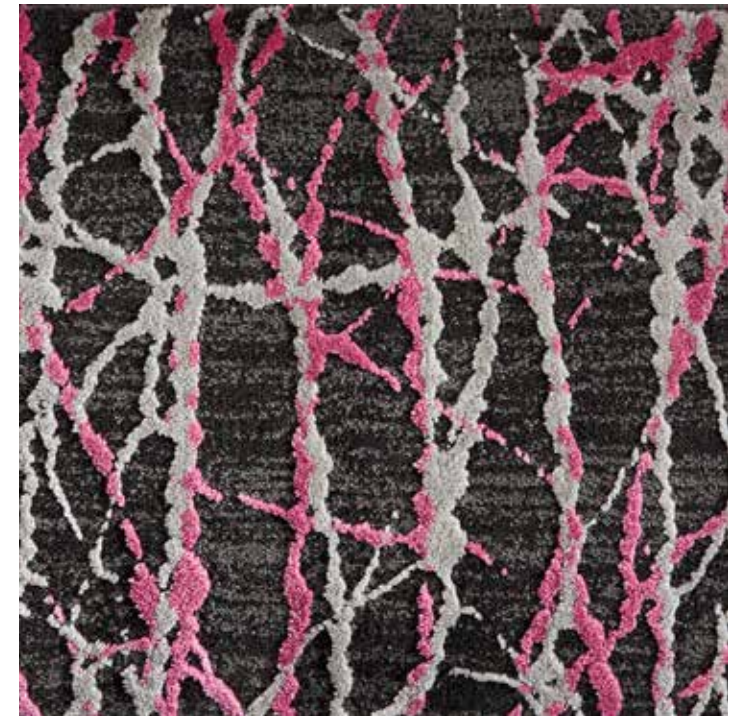
SOUND WAVES

AVAILABLE IN 6 COLORS
(SHOWN IN BLOSSOM)

RELAX COLLECTION • ROYALTRON™ / POLYSILK • WILTON FACE TO FACE • 13'2" WIDTH



@TARASOFFINTERIORS



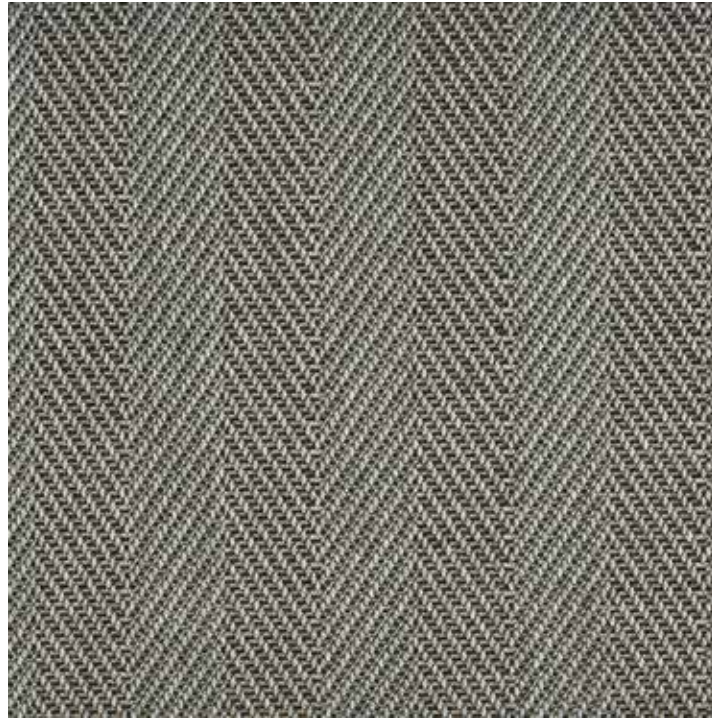
ST. KITTS

INDOOR | OUTDOOR
AVAILABLE IN 5 COLORS (SHOWN IN GUNMETAL)

FOUR SEASONS COLLECTION • ROYALTRON™ • FLAT WOVEN • 13'2" WIDTH



@CARPETPALACEBETHESDA



TUNISIA REMIX

INDOOR | OUTDOOR
AVAILABLE IN 5 COLORS (SHOWN IN BURNT UMBER)

FOUR SEASONS COLLECTION • UV STABILIZED ROYALTRON™ • FLAT WOVEN • 13'2" WIDTH



@CARPETCARAVAN



TILLARY

AVAILABLE IN 10 COLORS
(SHOWN IN JAVA)

COBBLE HILL COLLECTION • WOOL / POLYSILK • WILTON WOVEN • 12' WIDTH



@METDESIGNCENTER



STANTON STREET / DECORATIVE COMMERCIAL COLLECTION HIGHLIGHTS



18 | STANTON 2020

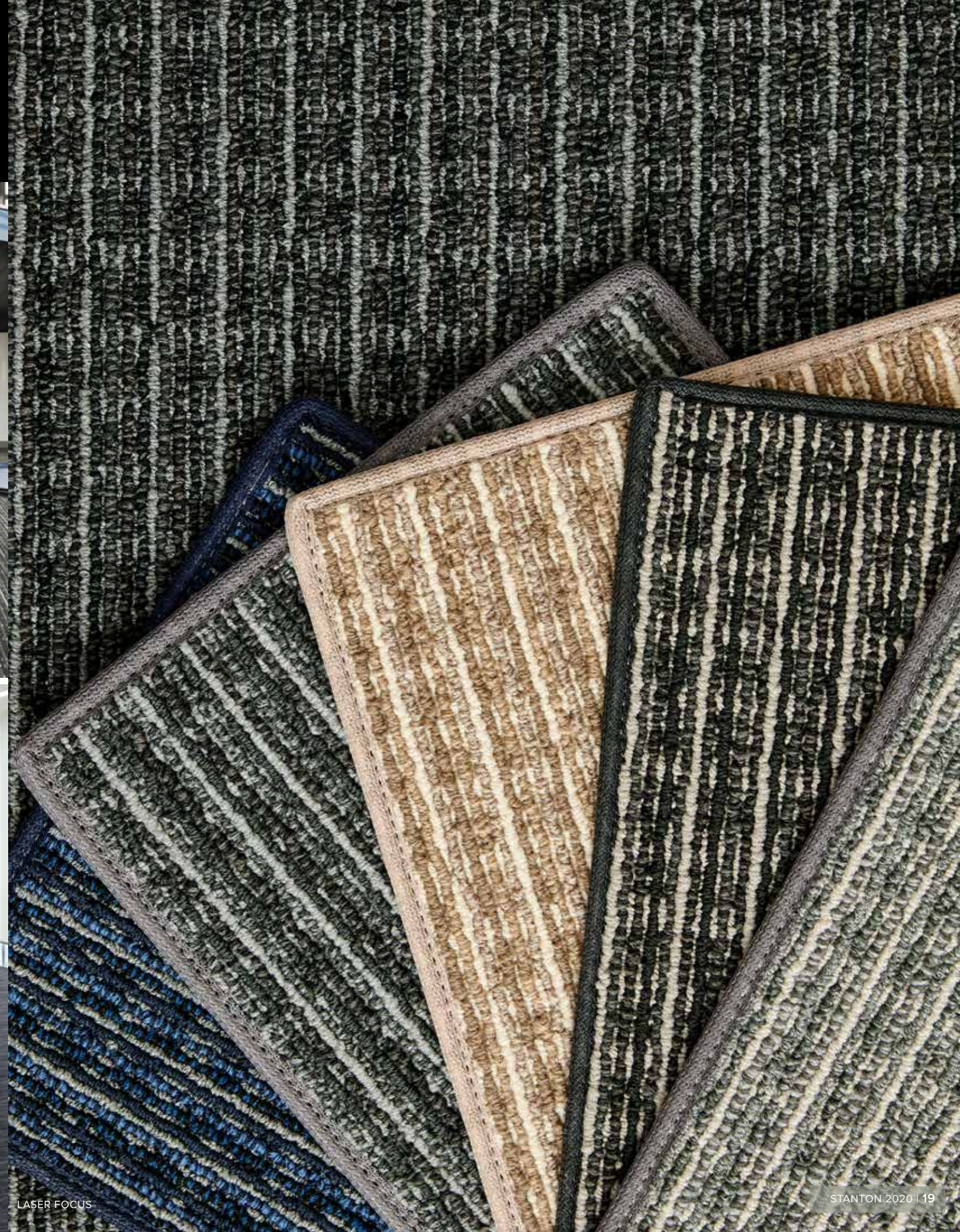
HEADQUARTERS PLANK IN GREIGE



LONGITUDE IN METAL



WAVELENGTH IN MIDNIGHT

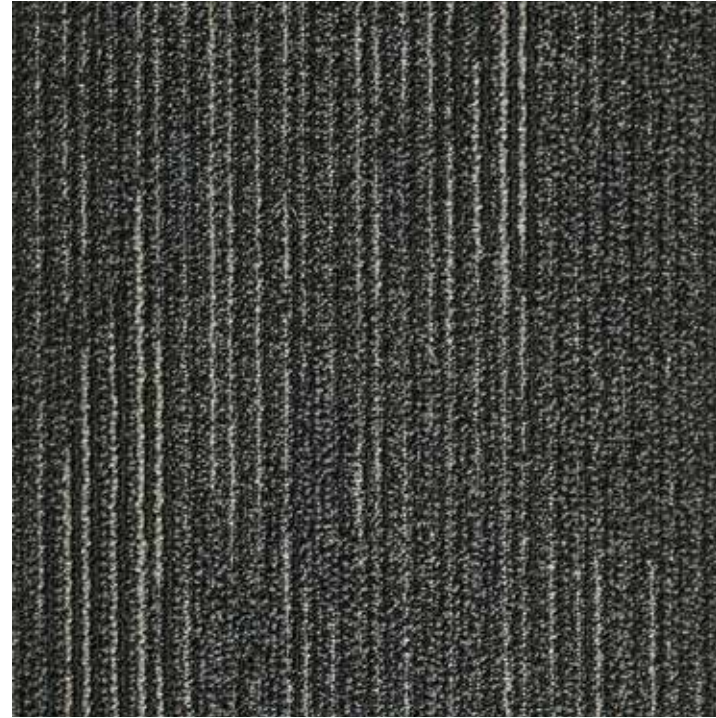


LASER FOCUS

HEADQUARTERS PLANK

CARPET PLANK • SD NYLON • 13" X 39" • CLASS 1

AVAILABLE IN 5 COLORS
(SHOWN IN JET BLACK)



LASER FOCUS

WALL TO WALL • SD NYLON 6 • 13' 2" WIDTH • CLASS 1

AVAILABLE IN 6 COLORS
(SHOWN IN DENIM)



GRAND CENTRAL

CARPET TILE • SD ROYALTRON® POLYPROPYLENE • 20" X 20" • CLASS 1

AVAILABLE IN 6 COLORS
(SHOWN IN MARINE)



@MARSHALLCARPETONE

LONGITUDE

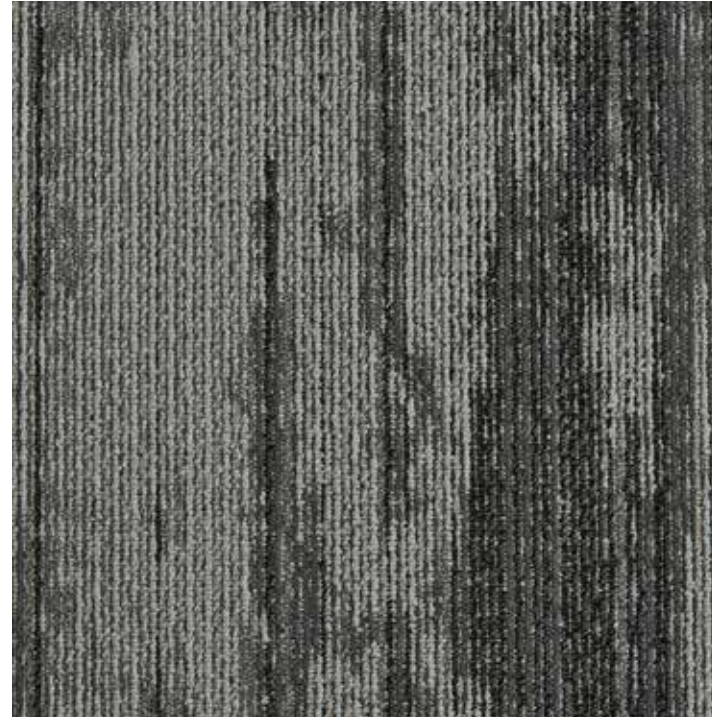
WALL TO WALL • SD NYLON 6 • 13' 2" WIDTH • CLASS 1

AVAILABLE IN 6 COLORS
(SHOWN IN CINDER)



PROSPECT PLANK

CARPET PLANK • SD NYLON • 13" X 39" • CLASS 1



AVAILABLE IN 6 COLORS
(SHOWN IN SHADOW)

WAVELENGTH

WALL TO WALL • SD NYLON 6 • 13' 2" • CLASS 1



AVAILABLE IN 7 COLORS
(SHOWN IN PEBBLE)

@THERUGMALL



PROSPECT PLANK TILE IN FOG

ANTRIM / COLLECTION HIGHLIGHTS



AUBURN

SILKEN COLLECTION • POLYSILK • HAND-LOOMED • 15' WIDTH

AVAILABLE IN 12 COLORS
(SHOWN IN CORAL)



DIVINITY

VISCOSE / WOOL • HAND-LOOMED • 15' WIDTH
WALL TO WALL - 6 COLORS • PRE-MADE RUGS - 4 COLORS (PLATINUM, CANVAS, FOSSIL, HEATHER) 6X9 • 8X10 • 9X12 • 10X14

(SHOWN IN PLATINUM)



@NIGOHSIAN_CARPET

CONGO

FINE WEAVE COLLECTION • PREMIUM WOOL • HAND-LOOMED • 15' WIDTH

AVAILABLE IN 6 COLORS
(SHOWN IN INK)



@FLOORSBYTHESHORE

EUREKA

WOOL / NYLON • HAND-LOOMED • 15' WIDTH

AVAILABLE IN 5 COLORS
(SHOWN IN SKY)



MINKA

PREMIUM WOOL • HAND-LOOMED • 15' WIDTH

AVAILABLE IN 5 COLORS
(SHOWN IN CLOUD)



PALERMO LINEAGE 2

PREMIUM WOOL • HAND-LOOMED • 15' WIDTH

WALL TO WALL - 11 COLORS • PRE-MADE RUGS - 4 COLORS (COCONUT, GREY FROST, CANVAS, SKY) 6X9 • 8X10 • 9X12

(SHOWN IN CANVAS)



@MAGARIANRUG



PALERMO

PREMIUM WOOL • HAND-LOOMED • 15' WIDTH

WALL TO WALL - 8 COLORS • PRE-MADE RUGS - 5 COLORS (CLOUD, LIMESTONE, PEARL, EARTH, SAND) 6X9 • 8X10 • 9X12

(SHOWN IN CLOUD)



@RUSSELLMARTINCARPETRUGS



PURITY

WOOL • HAND-LOOMED • 15' WIDTH

AVAILABLE IN 6 COLORS
(SHOWN IN RAVEN)



SUMANA

PREMIUM WOOL • HAND-LOOMED • 13'6" WIDTH

AVAILABLE IN 10 COLORS
(SHOWN IN SAND)



@REDICUTWSPT



VARKALA

SEACLIFF COLLECTION • UV STABILIZED POLYSILK • CLASS 1 • 15' WIDTH

INDOOR | OUTDOOR
AVAILABLE IN 5 COLORS (SHOWN IN FOSSIL)



TOA

WOOL / POLYSILK • HAND-LOOMED • 15' WIDTH

AVAILABLE IN 5 COLORS
(SHOWN IN STORM)



ZAMBEZI

NATURAL WOOL (UNDYED) • FINE WEAVE COLLECTION • 15' WIDTH

AVAILABLE IN 5 COLORS
(SHOWN IN FOSSIL)



ROSECORE / COLLECTION HIGHLIGHTS



METROPOLIS LOFT IN ANTIQUE



METROPOLIS GEO IN OYSTER



MIRAGE CHEETAH IN DENIM



GRANDEUR GRADIENT IN DUNE

AFFINITY ALLURE

AFFINITY COLLECTION • WOOL / NYLON • HAND-TUFTED • 15' WIDTH

AVAILABLE IN 5 COLORS
(SHOWN IN DENIM)



GRANDEUR GRADIENT

GRANDEUR COLLECTION • PREMIUM WOOL • HAND-TUFTED • 15' WIDTH

AVAILABLE IN 6 COLORS
(SHOWN IN DUNE)



LAGUNITA

LAGUNA COLLECTION • UV STABILIZED POLYSILK • HAND-LOOMED • 15' WIDTH

INDOOR | OUTDOOR
AVAILABLE IN 4 COLORS (SHOWN IN BEACH HOUSE)



METROPOLIS FLORET

METROPOLIS COLLECTION • WOOL / TENCEL • HAND-LOOMED • 15' WIDTH

AVAILABLE IN 5 COLORS
(SHOWN IN THUNDER)



METROPOLIS LOFT

METROPOLIS COLLECTION • TENCEL / WOOL • HAND-LOOMED • 15' WIDTH

AVAILABLE IN 7 COLORS
(SHOWN IN ANTIQUE)



@CARPETPALACEBETHESDA



NEXUS SOIRÉE

NEXUS COLLECTION • NYLON • HAND-LOOMED • 15' WIDTH

AVAILABLE IN 6 COLORS
(SHOWN IN CHROMIUM)



@KANTERSCARPET



MIRAGE CHEETAH

MIRAGE COLLECTION • POLYSILK / WOOL / VISCOSE • WILTON WOVEN • 13'2" WIDTH

AVAILABLE IN 5 COLORS
(SHOWN IN BARLEY)



@ALEMDICKEYKEEL



NEXUS SWOON

NEXUS COLLECTION • NYLON • HAND-LOOMED • 15' WIDTH

AVAILABLE IN 6 COLORS
(SHOWN IN SLATE)



SUPREME BLISS

TENCEL • HAND-LOOMED • 9' WIDTH

WALL TO WALL - 12 COLORS • PRE-MADE RUGS - 4 COLORS (STORM, OYSTER, ALMOND, EGGSHELL) 8X10 • 9X12 • 10X14

(SHOWN IN ALMOND)



SUPREME REBEL

SUPREME COLLECTION • TENCEL / WOOL • HAND-TUFTED • 15' WIDTH

AVAILABLE IN 8 COLORS
(SHOWN IN ECRU)



SUPREME INTRIGUE

SUPREME COLLECTION • TENCEL • HAND-LOOMED • 15' WIDTH

AVAILABLE IN 7 COLORS
(SHOWN IN ANTIQUE)



SUPREME STARLIT

SUPREME COLLECTION • TENCEL • HAND-LOOMED • 15' WIDTH

AVAILABLE IN 11 COLORS
(SHOWN IN SHELL)



@CARPETSHOWCASEDESIGN

CRESCENT / COLLECTION HIGHLIGHTS



FINNEGAN STRIPE IN SPA



ROYCE IN PUTTY BRIGGS



ANCESTRY

HERITAGE COLLECTION • JUTE / WOOL • HAND-LOOMED • 15' WIDTH

AVAILABLE IN 5 COLORS
(SHOWN IN STELL)



BEDFORD CORD

VISCOSE / WOOL • HAND-LOOMED • 15' WIDTH
WALL TO WALL - 5 COLORS • PRE-MADE RUGS - 3 COLORS (IVORY, BEIGE, SILVER) 8X10 • 9X12 • 10X14

(SHOWN IN SILVER)



ASHTON

TAILOR MADE COLLECTION • WOOL • HAND-LOOMED • 15' WIDTH

AVAILABLE IN 5 COLORS
(SHOWN IN CREAM)



ENCORE SQUARE

ENCORE COLLECTION • WOOL / ART SILK • HAND-LOOMED • 15' WIDTH

AVAILABLE IN 4 COLORS
(SHOWN IN OYSTER)



FINNEGAN STRIPE

TAILOR MADE COLLECTION • PREMIUM WOOL • HAND-LOOMED • 15' WIDTH

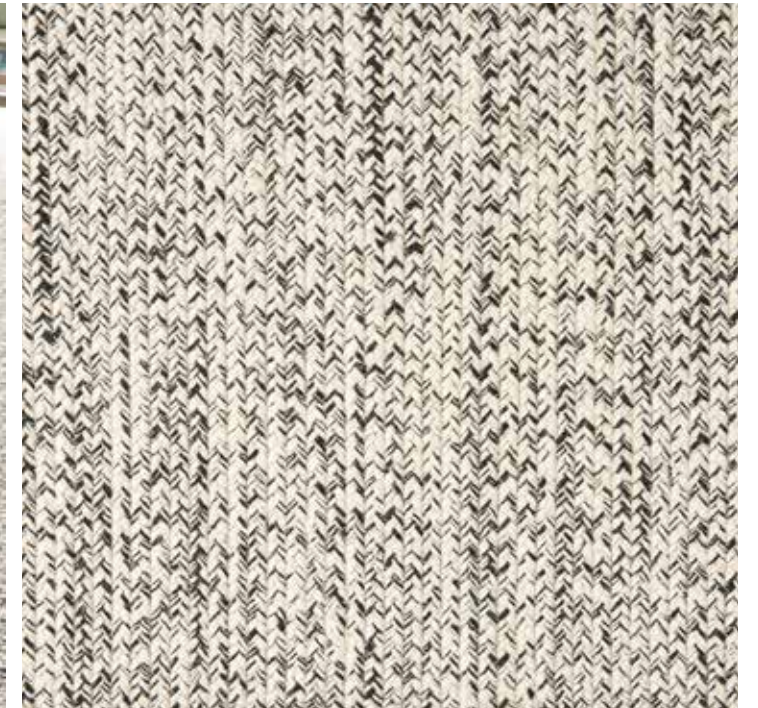
AVAILABLE IN 5 COLORS
(SHOWN IN LAKESIDE)



SOLIMAN BAY

CABANA COLLECTION • UV STABILIZED POLYSILK • HAND-LOOMED • 15' WIDTH

INDOOR | OUTDOOR
AVAILABLE IN 6 COLORS (SHOWN IN ONYX)



ROYCE

TAILOR MADE COLLECTION • NYLON / WOOL • HAND-LOOMED • 15' WIDTH

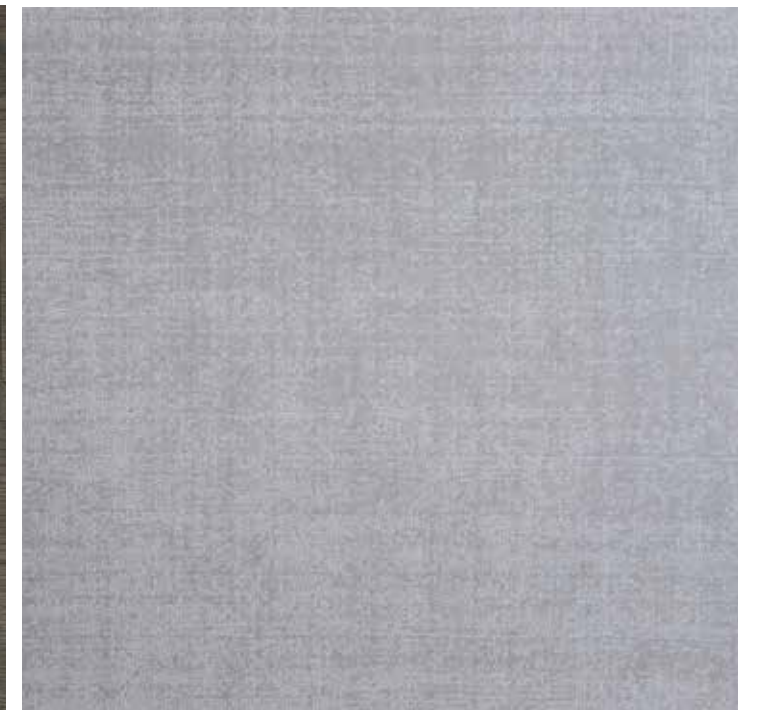
AVAILABLE IN 5 COLORS
(SHOWN IN PUTTY)



SUBLIME ESSENZE

SUBLIME COLLECTION • NYLON • HAND-LOOMED • 15' WIDTH

AVAILABLE IN 6 COLORS
(SHOWN IN CLOUD)



TATTERSALL

TAILOR MADE COLLECTION • NEW ZEALAND WOOL • HAND-LOOMED • 15' WIDTH

AVAILABLE IN 4 COLORS
(SHOWN IN MIDNIGHT)



@ASHTONKLOMPINTERIORS



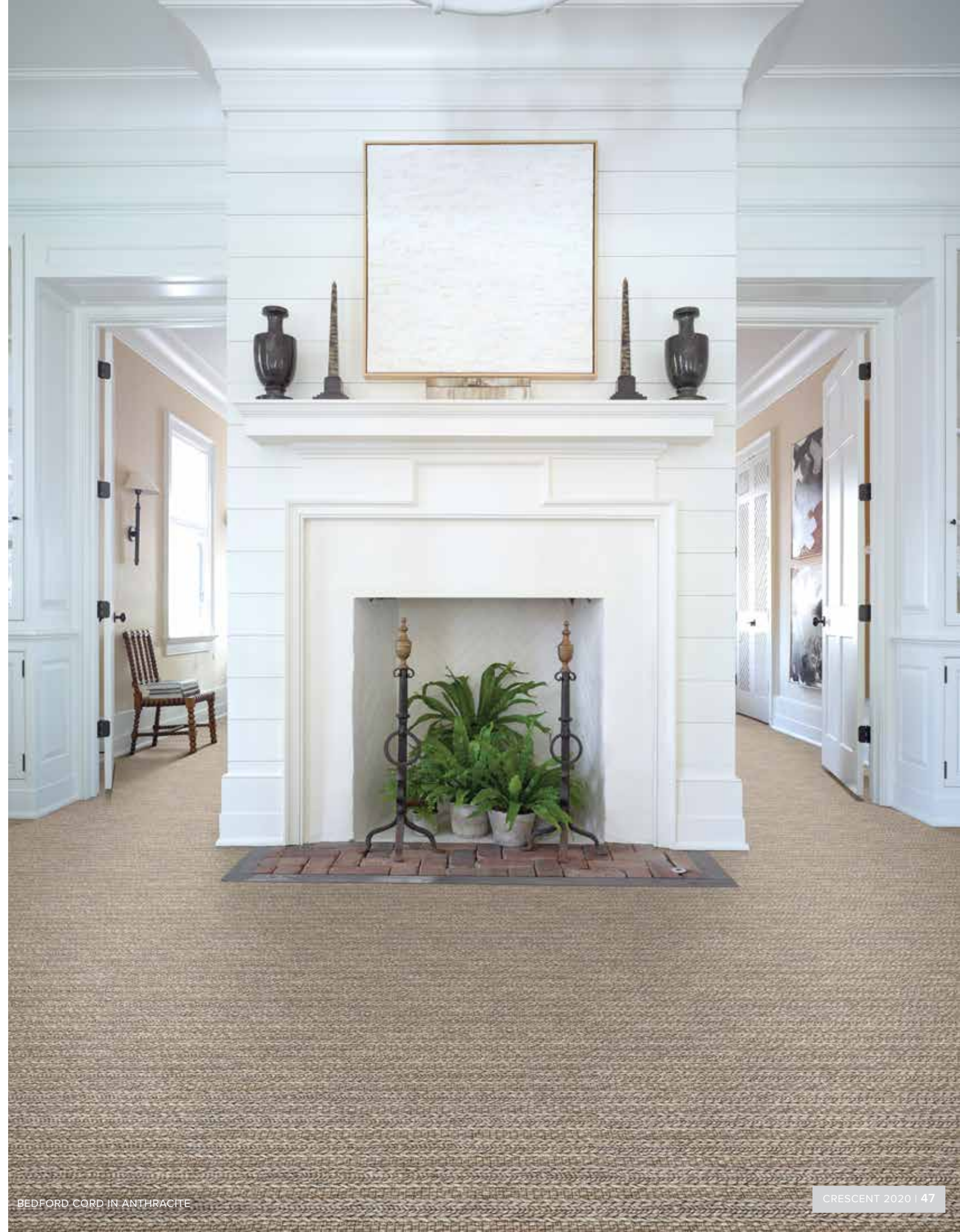
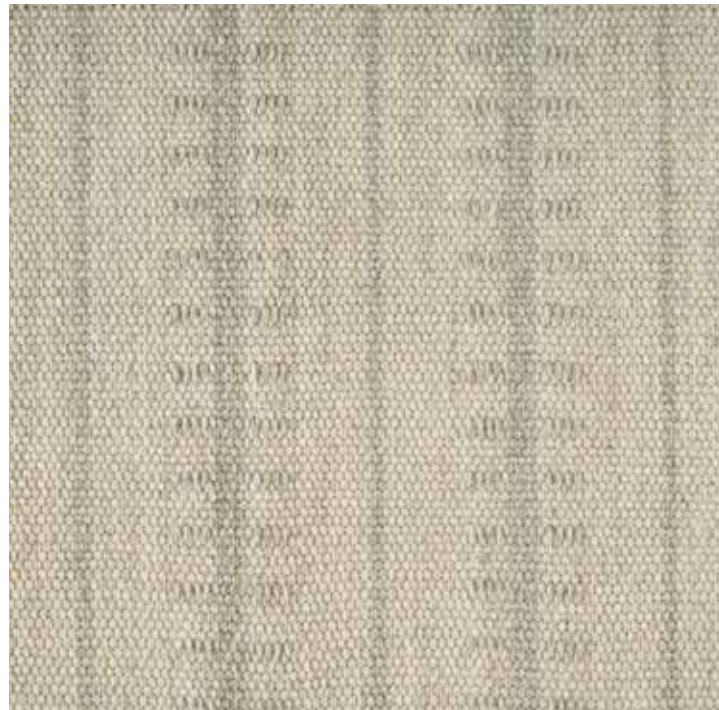
TICKING STRIPE

TAILOR MADE COLLECTION • NEW ZEALAND WOOL • HAND-LOOMED • 15' WIDTH

AVAILABLE IN 4 COLORS
(SHOWN IN PEARL)

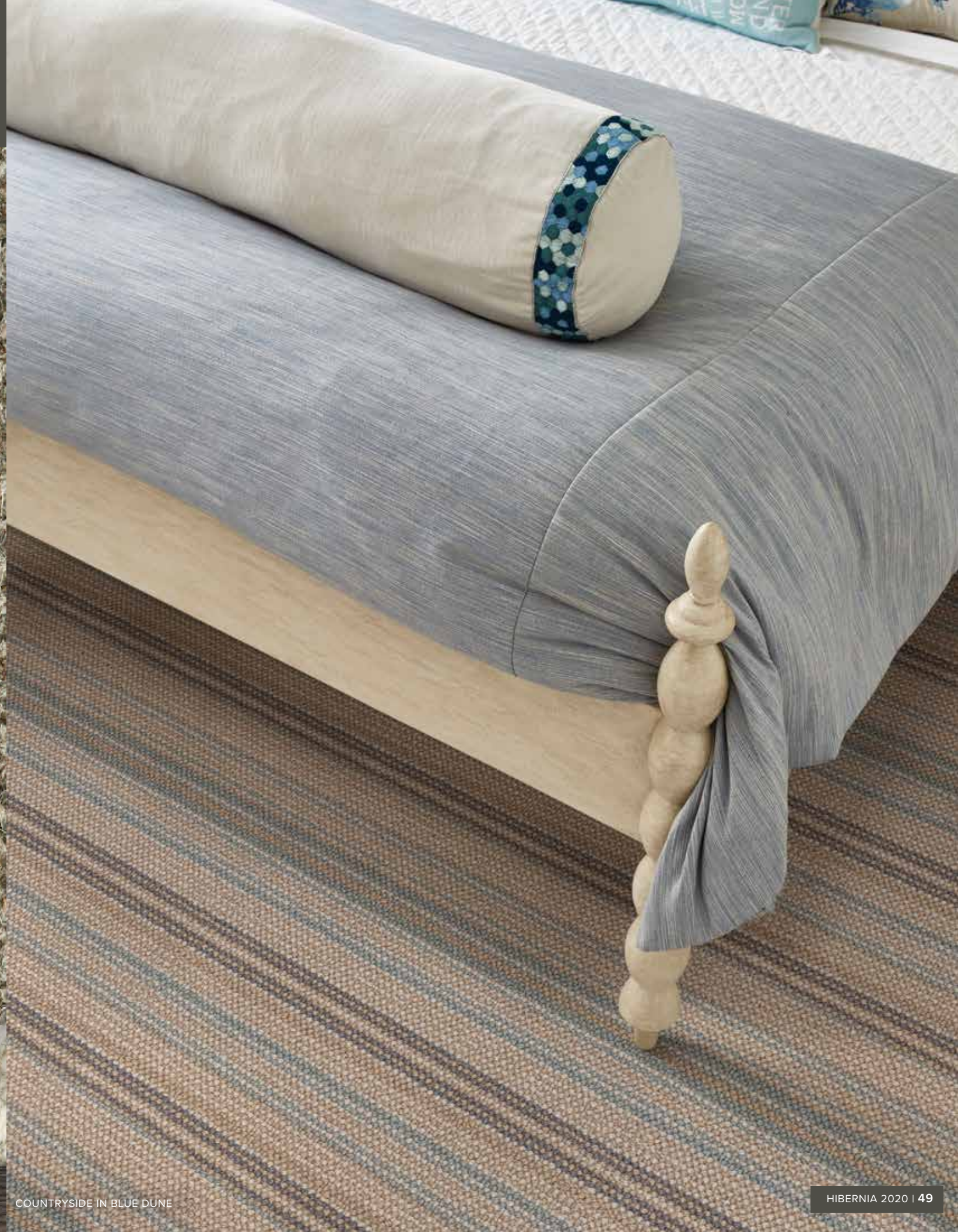
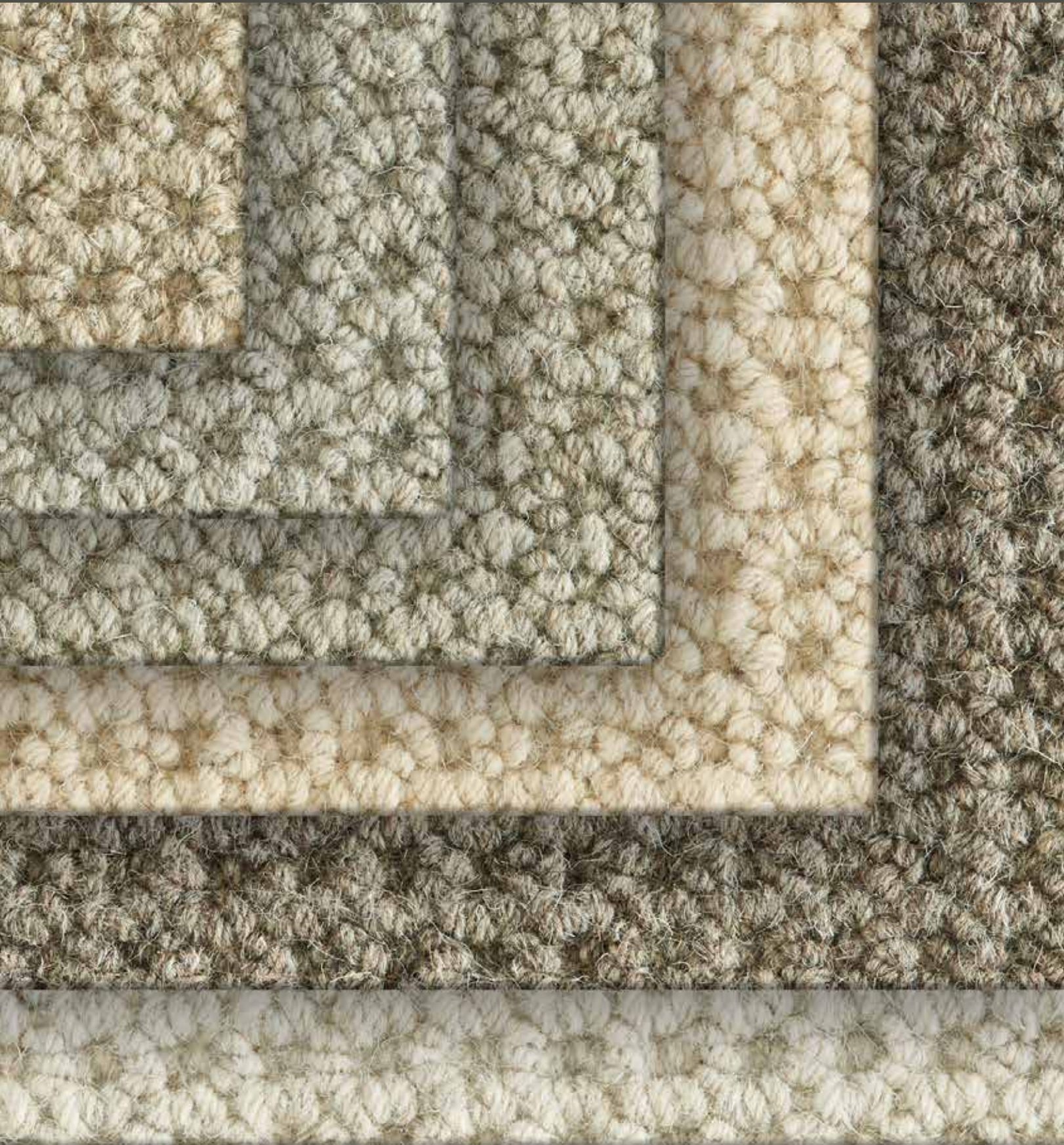


@THECARPETWORKROOM



BEDFORD CORD IN ANTHRACITE

HIBERNIA / COLLECTION HIGHLIGHTS



COLONY

WOOL • HAND-LOOMED • 15' WIDTH



AVAILABLE IN 6 COLORS
(SHOWN IN PEARL)

SHEAR GENIUS

NEW ZEALAND WOOL • MACHINE TUFTED • 12' WIDTH



AVAILABLE IN 7 COLORS
(SHOWN IN CHILLED CHARDONNAY)

COUNTRYSIDE

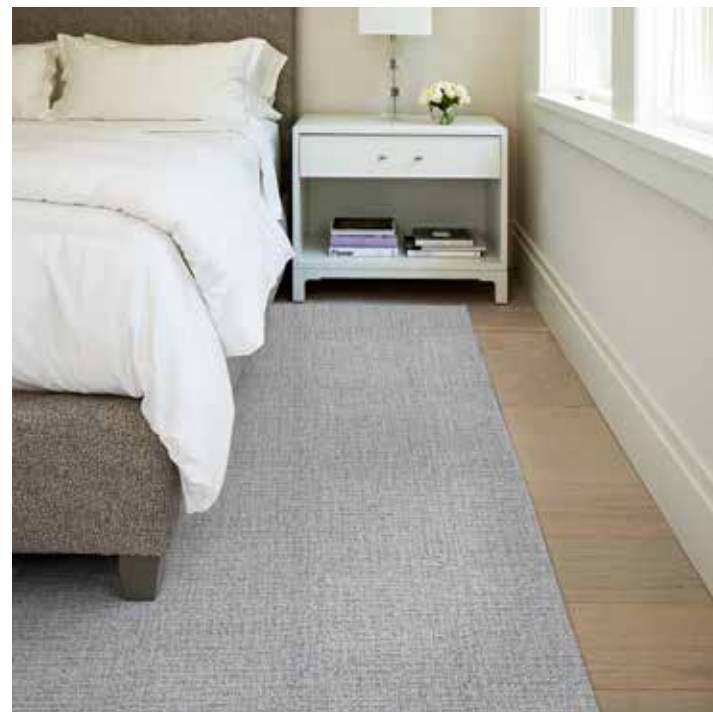
PREMIUM WOOL • MACHINE-TUFTED • 13'2" WIDTH



AVAILABLE IN 5 COLORS
(SHOWN IN BLUE DUNE)

TUCKER

WOOL • HAND-TUFTED • 15' WIDTH

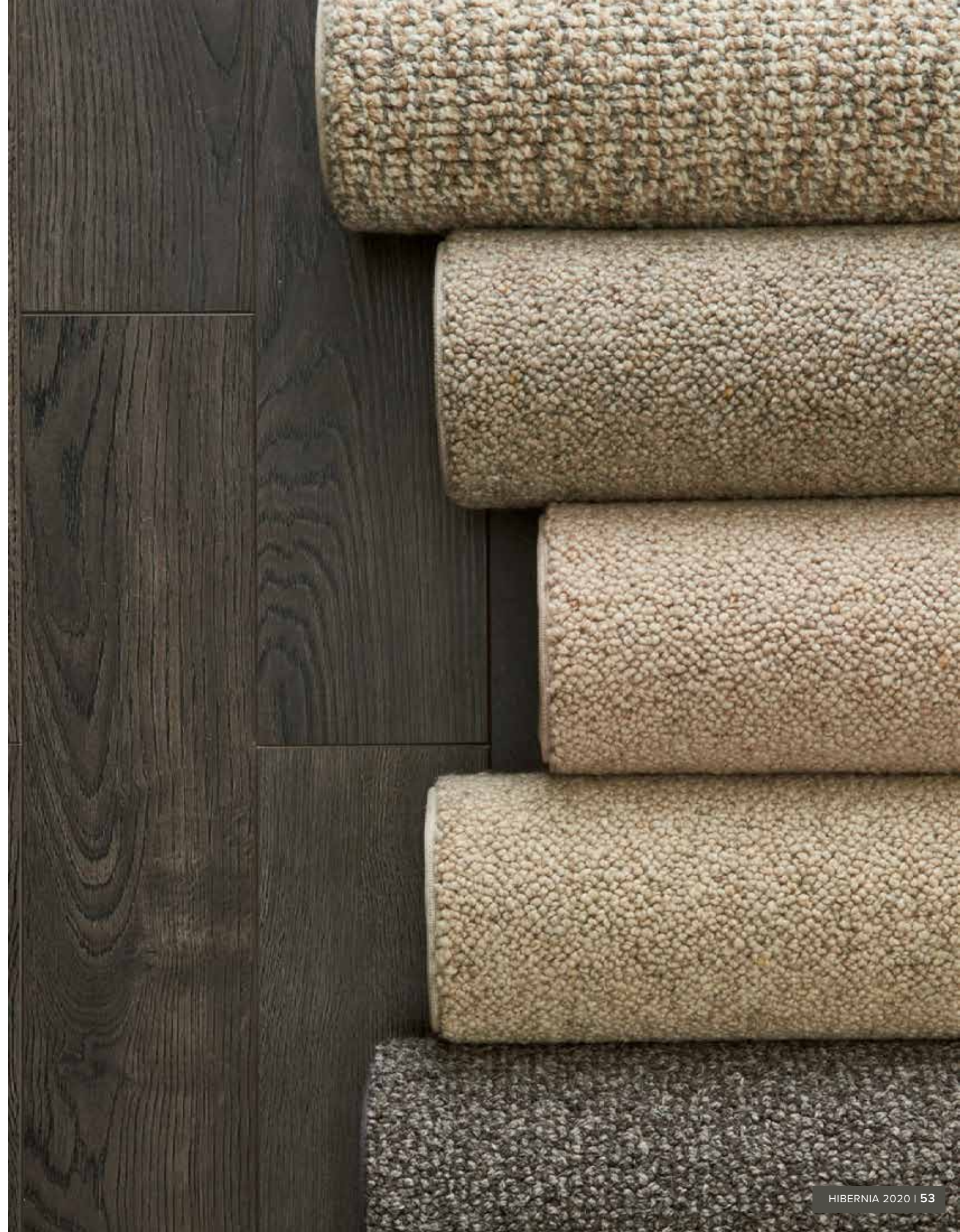


AVAILABLE IN 6 COLORS
(SHOWN IN SKY)

VILLAGER

WOOL • HAND-TUFTED • 15' WIDTH

AVAILABLE IN 6 COLORS
(SHOWN IN CLOUD)





BLACK AND WHITE IN URBANITE ECLIPSE



BLACK AND WHITE IN CITYFIED RAVEN



BLACK AND WHITE IN BEACHVIEW BLANCA

SEAVIEW — GLACIER

BLACK AND WHITE



OCEANVIEW — BLANK CANVAS

BLACK AND WHITE



WOODLANDS

AVAILABLE IN 4 COLORS
(SHOWN IN SHELL)



TIMBERLAND

AVAILABLE IN 5 COLORS
(SHOWN IN HAZEL)



GROVE

AVAILABLE IN 4 COLORS
(SHOWN IN ROSEWOOD)



BLACK AND WHITE IN CITYFIED RAVEN

ELITE DISPLAY



■ This highly popular 2-unit display features a sleek wood grain finish to match Stanton's Atelier Display. Newly-designed columns feature a more visible side view while the row lighting sports more light with less heat. One Elite Display now includes 2 units containing 140 pins (70 each unit) for the ultimate in flexible layout. The new 140-pin capacity allows for room to grow while allowing for an add-on display as well as more easily segmenting product categories

MATERIAL: Light Grey Laminate / **DIMENSIONS:** 14'10" W x 7'9"H x 2'D / **PRODUCT SAMPLES:** Holds 140 - 24"W x 36"L Sample Boards

ATELIER DISPLAY



■ Our 40-pin display offers the flexibility to showcase this program in a compact, modern way:

- Featuring well over 40 products, backed by extended warranties for both residential and commercial applications.
- High style designs in geometric, textured and rustic grid patterns including select STAINMASTER® PetProtect®, 3M Scotchgard™ protector and STAINSAFE™ carpet programs.

MATERIAL: Light Grey Laminate / **DIMENSIONS:** 5'3"W x 5'5"H x 2'11"D / **PRODUCT SAMPLES:** Holds 40 - 24"W x 36"L Sample Boards

NATURAL DISPLAY

Design & Performance Display featuring High Style Indoor / Outdoor

INITIAL PACKAGE:
26 Boards + 3 Finishing Boards (1 Slide-In) *includes 2020 updates



Wool Textures Display featuring naturally smart style

INITIAL PACKAGE:
20 Boards + 3 Finishing Boards (1 Slide-In) *includes 2020 updates

■ UNIT 1 – Design & Performance – Dynamic patterns and textured weaves meets high performance / low maintenance fibers including indoor / outdoor; the perfect combination for today's design conscious, active lifestyle consumer.

■ UNIT 2 – Wool Textures – Refined textured wools and wool blends showcasing modern classics and transitional styles; the perfect backdrop for any interior setting. Each display is compact making it highly adaptable to your showroom space. It comes well equipped with 4 finishing boards to assist in the perfect made to order area rug, hall/stair runner, or wall-to-wall carpet.

DIMENSIONS: Width: 93 1/2" Height: 80 3/4" Depth: 23 5/8" / **BOARD SIZE:** 20" x 28" / **BOARD CAPACITY:** 60 Pin Capacity For Future Expansion (30 Unit 1, 30 Unit 2)

STANTON STREET DISPLAY



■ The Stanton Street display features broadloom, carpet tile and plank tile for application in spaces ranging from medium to heavy commercial. The display ships with 24 high-style decorative commercial Class I products with coordinating architectural folders.

DIMENSIONS: 68"W x 64"H x 22"D / **PRODUCT SAMPLES:** Holds 25 - 21"W x 24"L Display Boards

ANTRIM DISPLAY



■ Antrim's two-tier display offers an attractive and efficient way to merchandise its exceptional product line. The display unit will feature 60 product boards (22"x28" board size), including current & new 2020 introductions. The two-tier design allows for enhanced product viewing and boasts a 60 pin capacity to accommodate future products as the line continues to evolve and expand.

DIMENSIONS: 79"H x 74.25"W x 25.5"D
BOARD CAPACITY: Holds 60 sample boards, 22" x 28"
MATERIAL: Grey Wood Veneer

CRESCENT DISPLAY



■ Crescent's two-tier display offers an attractive and efficient way to merchandise its distinctive product line. The display unit will feature approximately 40 boards including current and 2020 introductions in a 22"x28" board size. The two-tier design allows for enhanced product viewing and boasts additional capacity to accommodate future products as the line continues to evolve and expand.

DIMENSIONS: 79"H x 64.25"W x 25.5"D
BOARD CAPACITY: Holds 40 sample boards 22"x28"
MATERIAL: Smoked Grey Wood Veneer

ROSECORE DISPLAY



■ Rosecore's two-tier display offers a new, attractive and efficient way to merchandise the luxurious Rosecore product line. The Rosecore 2020 display enjoys a 50 pin capacity, leaving appropriate room for future growth.

DIMENSIONS: 79"H x 64.25"W x 25.5"D
BOARD CAPACITY: Holds 50 sample boards, 22" x 28"
MATERIAL: Grey Wood Veneer
INCLUDES: 42 product boards including current styles & new 2020 Rosecore products PLUS Binding board + hand serging feature board.

HIBERNIA DISPLAY



■ Hibernia's 30-pin display offers an attractive way to merchandise its distinctive premium wool product line. The display unit will feature 18 styles from the current line + 4 new styles for 2020 in an 18" x 24" board size as well as a center graphic panel creating an exceptional presentation of Hibernia's fine wool products.

DIMENSIONS: 63"H x 64"W x 30"D
BOARD CAPACITY: 30 pin capacity. Display ships with 19 styles plus 2 slide in boards.

DECORATIVE WATERPROOF FLOORING DISPLAY



PRODUCT SPECIFICATIONS

Planks Per Box: **11 Planks**
 Sq. Feet Per Box: **26.03**
 Plank Dimensions: **7" x 48"**
 Wear Layer: **22mil**
 Total Thickness: **5mm**
 (4mm SPC Core + 1mm IXPE Pad)



MATERIAL: Grey Wood Veneer
DIMENSIONS: 45.0" W x 75.2" H x 32.3" D
PRODUCT SAMPLES: Ships with and Holds 24 Sample Boards 20" W x 27" L



FLOOR: GROVE IN ROSEWOOD
 RUG: ICONIC BREEZE IN BRONZE



FLOOR: WOODLANDS IN SHELL
 RUG: AUGUSTUS IN ANTIQUE

24/7 customer service functions
that can be completed with a few clicks!

Easier,
Simpler,
Faster!



Create A Rug

OUR MOST ADVANCED FEATURE



Turn 20 minutes
into 20 seconds!

1. Choose your style, color, binding, finishing and size
2. Click to calculate for an instant price quote
3. Directly place order from shopping cart or save your custom rug quote for later



Order Wall-to-Wall Carpet and Swatches

- Check and reserve stock



View Roll & Remnant Specials and Check Discontinued Products



Resource Library

- Images for marketing and advertising
- Installation guidelines



Pricing

- Mark up feature
- Export your pricing

CREATE A RUG

CUSTOM RUGS MADE EASY!

1

Select a Carpet Style & Color on
www.stantonb2b.com/createrug

2

Select from any of our Finishing or Binding Options:



MODERN EDGE SERGING



HAND SERGING



MACHINE SERGING



COTTON BINDING
(2 3/4" & 4 3/4" WIDTHS)



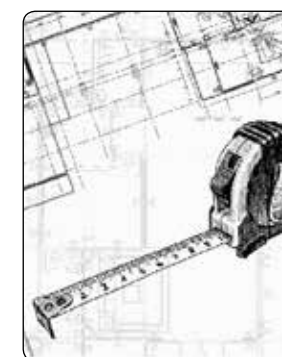
LINEN BINDING
(4 3/4" WIDTHS)



ALFRESCO
(INDOOR/OUTDOOR)

3

Choose your Size (any length up to
the full width of the carpet)



4

Choose your Attached Padding:



FELT BACKING



NON-SKID
BACKING



OUTDOOR
BACKING

5

Place Your Order!



FLOOR: WOODLANDS IN WALNUT
RUG: STILLWATER IN DESERT

STANTON

CARPET + CUSTOM RUGS + RUNNERS

RUNNING LINE BRAND HIGHLIGHTS 2020

ANTRIM
HANDWOVEN CARPETS & RUGS

Rosecore
LUXURIOUS CARPET & CUSTOM RUGS

Crescent
DISTINCTIVE CARPET | CUSTOM RUGS

HIBERNIA
WOOLEN MILLS

CUSTOMER SERVICE HOURS 8:30AM - 6:00PM EST • 706.624.9385 • STANTONB2B.COM